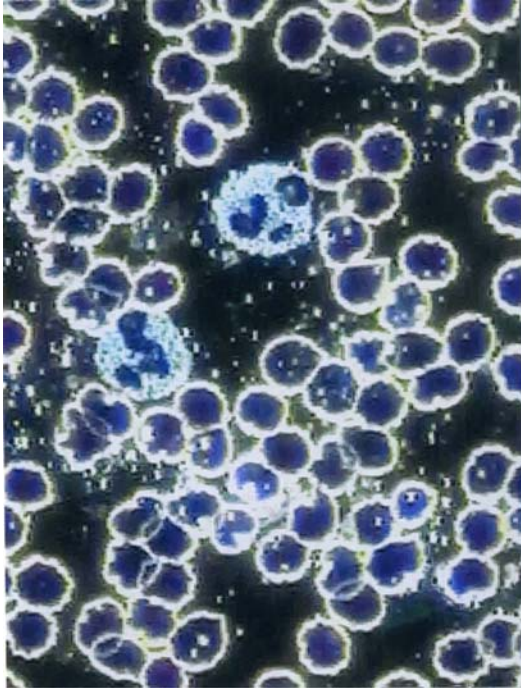


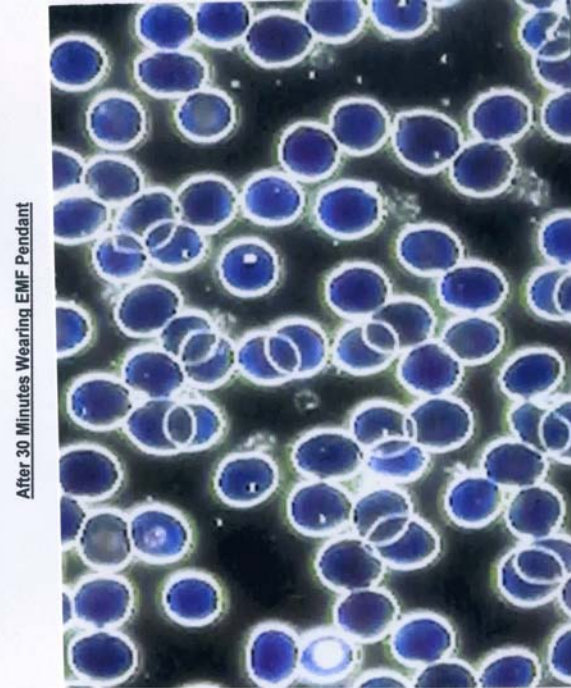
## Blood Cell Clumping – Before/After “EMF Plus” Pendant

**Subject 1:** “23 year old male who indulged the night before with beer and not enough sleep. His blood after 30 minute recheck of wearing the EMF pendant began to separate (alkalyze) and the cell structure improved..” *Blood Cell Analyst*

**Before (Without EMF Pendant)**

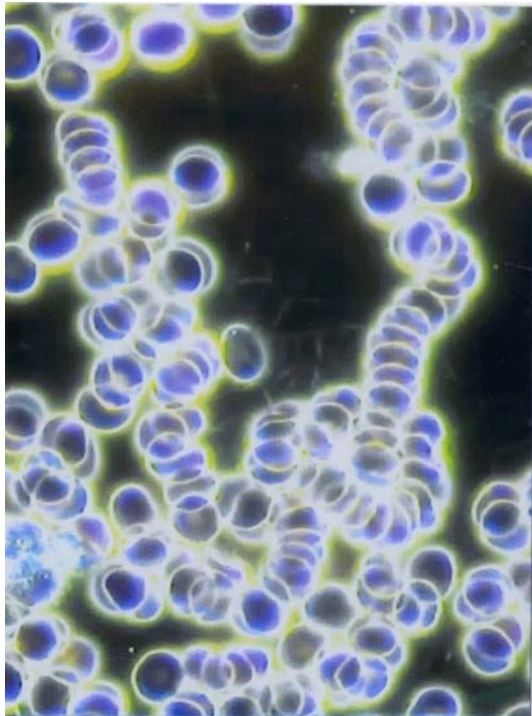


**After 30 Minutes Wearing EMF Pendant)**



**Subject 2:** “54 year old man that saw a huge improvement with the cells separating and the liver stress (looks like a spider webbing) start to improve.” *Blood Cell Analyst*

**Before (Without EMF Pendant)**



**After 30 Minutes Wearing EMF Pendant)**

